



Titan® Bold Electronic Hybrid Roll Towel Dispenser



Read all instructions before using this dispenser

SAVE THESE INSTRUCTIONS

Warning

To prevent fire or electric shock, do not expose the dispenser to rain or moisture. Keep the dispenser away from strong magnets, heat sources, electrical wiring, and excessive dust. The dispenser is not to be used by persons (including children) with reduced physical, sensory, or mental capabilities, or lack of experience and knowledge, unless they have been given supervision or instruction. Children shall not play with the appliance. This appliance is not a toy.

To reduce the risk of burns, fire, electric shock, or injury to persons:

1. Use this dispenser only for its intended use as described in these instructions.
2. Remove batteries before putting on, taking off parts or servicing the dispenser.
3. Close supervision is necessary when this dispenser is used by, or near children, invalids, or disabled persons.
4. Always remove batteries from the dispenser before cleaning or if dispenser is stored or unused for a long period of time.
5. Do not use attachments not recommended by the manufacturer.
5. Never drop or insert any object into any opening.
6. Do not use outdoors.
8. Do not operate where aerosol (spray) products are being used or where oxygen is being administered.
9. The battery supply terminals are not to be short-circuited.
10. Different types of batteries or new and used batteries are not to be mixed.
11. Batteries are to be inserted with the correct polarity.
12. Exhausted batteries are to be removed from the appliance and safely disposed of according to local laws.
13. Non-rechargeable batteries are not to be recharged.

Cleaning

When cleaning, make sure to remove the batteries. Do not use liquid or aerosol cleaners. Use a cloth, lightly dampened with water for cleaning the exterior of the dispenser. Compressed air or a vacuum can be used to clean out the interior should paper dust accumulate. The recommended placement for the dispenser is 54" (137cm) from the floor to the bottom of the dispenser, as recommended for ADA compliance.

Mounting the dispenser

Make sure that the dispenser is securely fixed to the wall using appropriate wall plugs or secured directly to a stud before using. Refer to local building requirements where necessary. The recommended placement for the dispenser is 54" (137cm) from the floor to the bottom of the dispenser. Mounting the dispenser to a metal surface is not recommended.

Legal Notices

FCC Part 15

NOTE: This equipment has been tested and found to comply with the limits for a Class A digital device, pursuant to part 15 of the FCC Rules. These limits are designed to provide reasonable protection against harmful interference when the equipment is operated in a commercial environment. This equipment generates, uses, and can radiate radio frequency energy and, if not installed and used in accordance with the instruction manual, may cause harmful interference to radio communications.

Operation of this equipment in a residential area is likely to cause harmful interference in which case the user will be required to correct the interference at his own expense.

FCC Warning

Changes or modifications not expressly approved by the party responsible for compliance with the FCC rules could void the user's authority to operate this equipment.

Specifications

Voltage Rating:

6.5VDC 2.5A - 4 X 1.5V, D cell Alkaline LR20 Batteries. Do not use rechargeable batteries.

Appliance can only be externally powered by the provided external power supply ICP30-065-3500 (purchased separately)

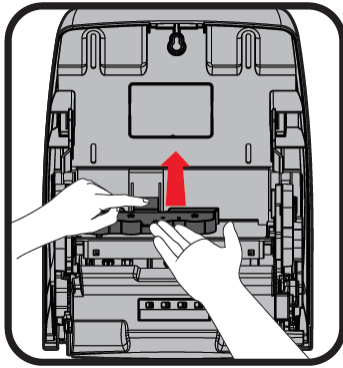
Recommended Operating Temperature

41° to 95° F (5° to 35°C)

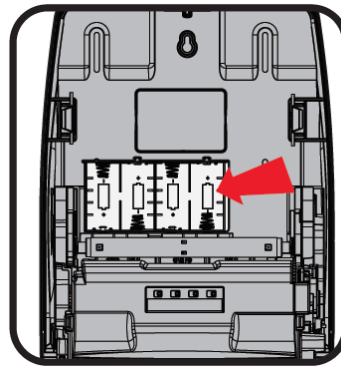


Installing or Removing Batteries - Use Size D alkaline LR20 batteries only

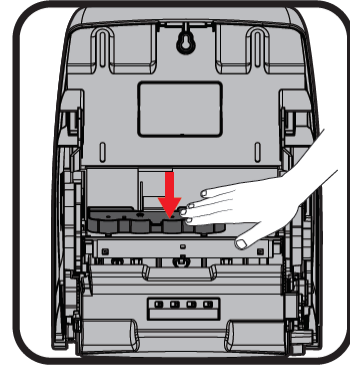
Remove Battery Holder from Dispenser



Insert or remove batteries



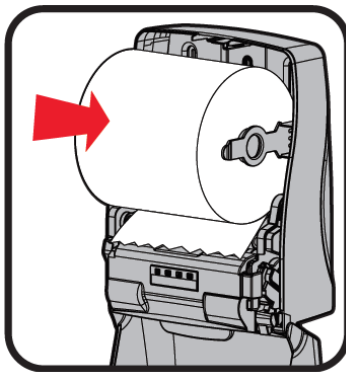
Install Battery Holder to Dispenser



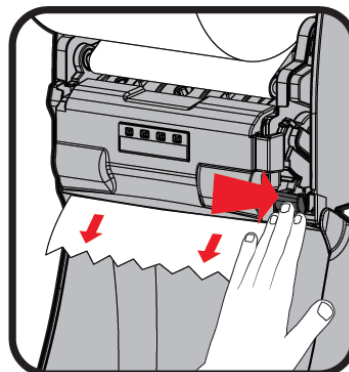
NOTE - Removal of batteries is the opposite of installation.

Loading paper

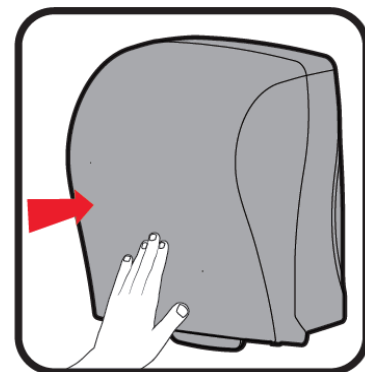
Insert new roll into the dispenser with the core plug on the left



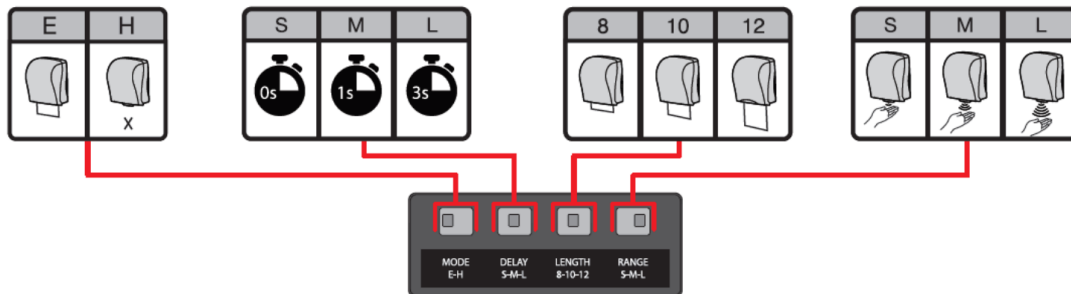
Press and hold the load button to feed paper until it exits the front.



Close the dispenser door, the dispenser is now ready for use.



Settings and Indicators



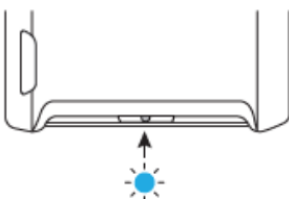
MODE - This is the paper dispensing mode.

E = Exposed – Paper is hanging from dispenser
H = Hidden – Paper is dispensed from hand wave

LENGTH* – This is the dispenses towel length.

8 = 8" Sheet length (20 cm)
10 = 10" Sheet length (25 cm)
12 = 12" Sheet length (30 cm)

LED Location



DELAY* – This is the delay between towel dispenses.

S = Short delay – 0
M = Medium delay – 1 Second
L = Long delay – 3 Second

RANGE* – This is the sensor detection range.

S = Short range – 4" (10cm) range
M = Medium range – 6" (15 cm) range
L = Long range – 8" (20 cm) range

LED Operations

